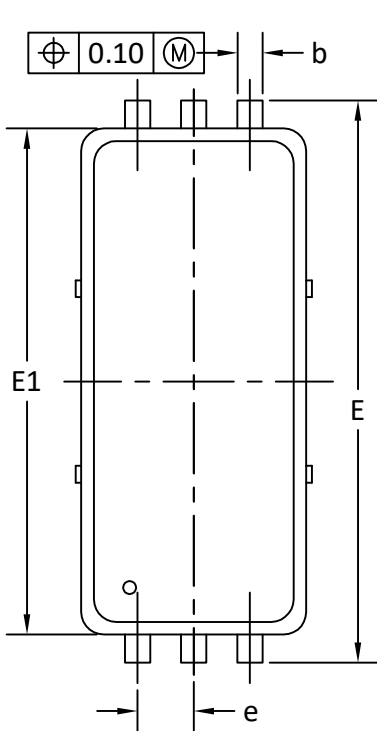
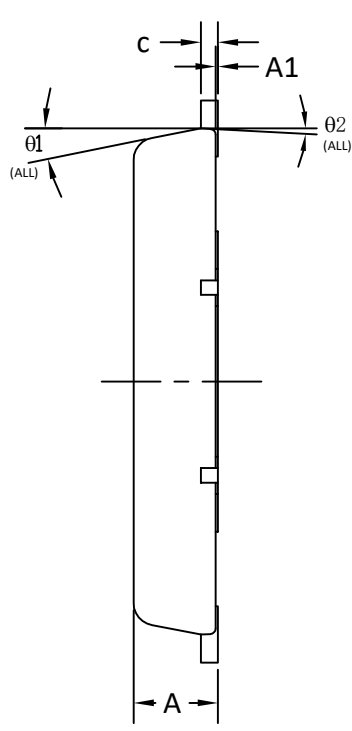




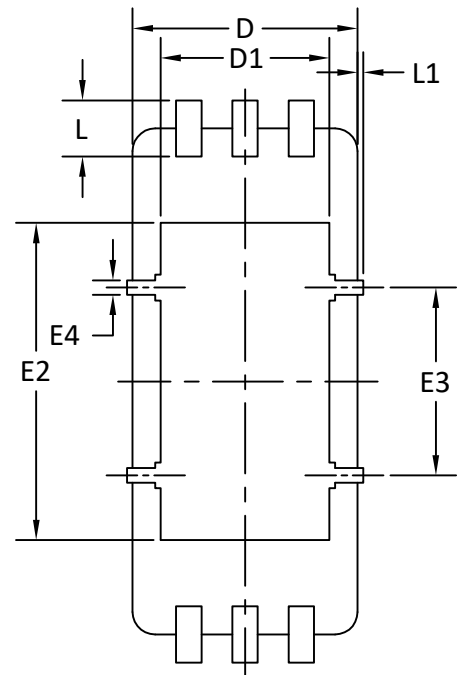
DFN2x5A_6L_EP1_P PACKAGE OUTLINE



TOP VIEW

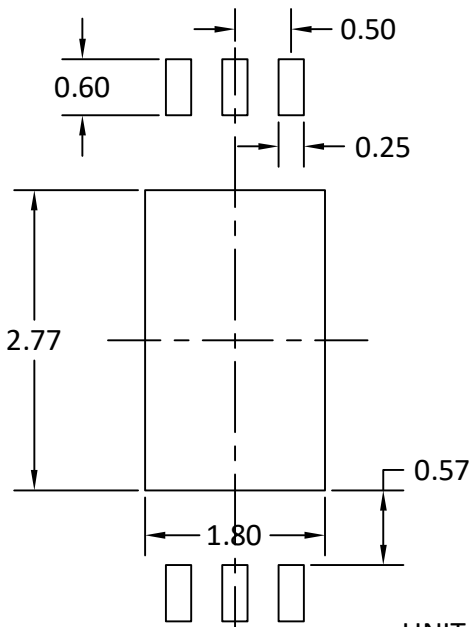


SIDE VIEW



BOTTOM VIEW

RECOMMENDED LAND PATTERN



UNIT: mm

SYMBOLS	DIMENSIONS IN MILLIMETERS		
	MIN	NOM	MAX
A	0.70	0.75	0.80
A1	0.00	---	0.05
b	0.20	0.23	0.30
c	0.10	0.15	0.20
D	1.90	2.00	2.10
D1	1.40	1.50	1.70
E	4.90	5.00	5.10
E1	4.40	4.50	4.60
E2	2.72	2.82	3.02
E3	1.62	1.67	1.72
E4	0.08	0.13	0.18
e	0.45	0.50	0.55
L	0.40	0.50	0.60
L1	0	---	0.10
theta1	0°	10°	12°
theta2	0°	3°	5°

NOTE

1. PACKAGE BODY SIZES EXCLUDE MOLD FLASH AND GATE BURRS.
MOLD FLASH AT THE NON-LEAD SIDES SHOULD BE LESS THAN 6 MIL EACH.
2. CONTROLLING DIMENSION IS MILLIMETER.
CONVERTED INCH DIMENSIONS ARE NOT NECESSARILY EXACT.
3. THIS PACKAGE WAS QUALIFIED USING IR REFLOW PROCESS (JEDEC STANDARD). FOR USAGE IN OTHER SOLDERING PROCESSES, PLEASE CONTACT LOCAL AOS REPRESENTATIVES.