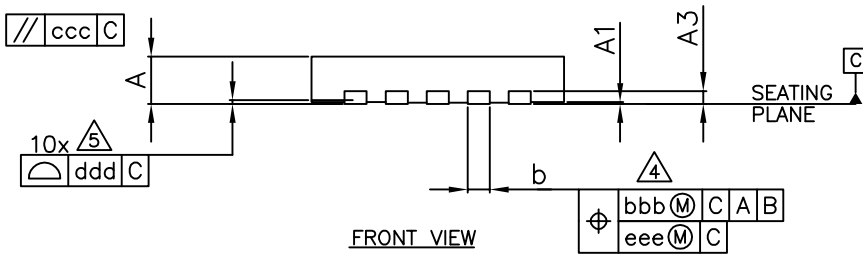
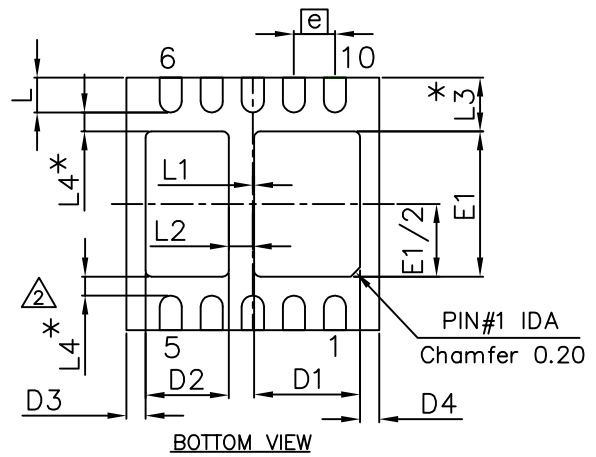
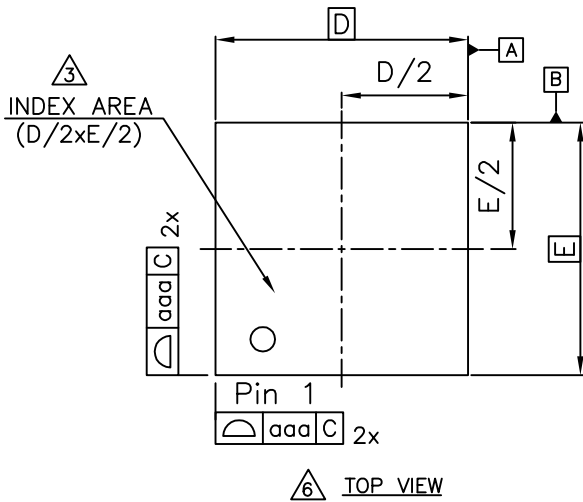
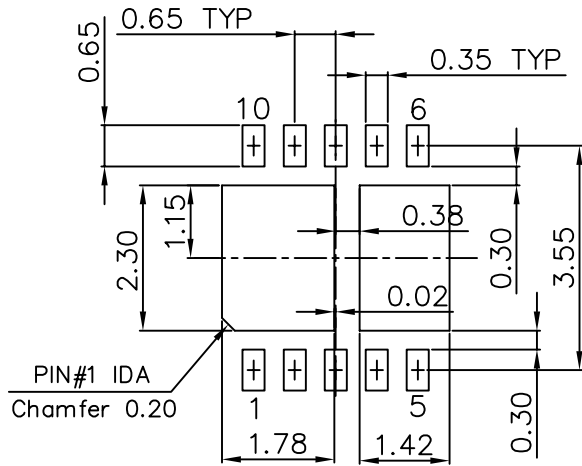




DFN4x4\_10L\_EP2\_S PACKAGE OUTLINE



RECOMMENDED LAND PATTERN



SYMBOL	DIMENSIONS IN MILLIMETERS			DIMENSIONS IN INCHES		
	MIN.	NOM.	MAX.	MIN.	NOM.	MAX.
A	0.70	0.75	0.80	0.028	0.030	0.031
A1	0.00	0.02	0.05	0.000	0.001	0.002
A3	0.203 REF.			0.008 REF.		
b	0.30	0.35	0.40	0.012	0.014	0.016
D	3.95	4.00	4.05	0.156	0.157	0.159
D1	1.58	1.68	1.78	0.062	0.066	0.070
D2	1.22	1.32	1.42	0.048	0.052	0.056
D3	0.3 REF.			0.0118 REF.		
D4	0.3 REF.			0.0118 REF.		
E	3.95	4.00	4.05	0.156	0.157	0.159
E1	2.20	2.30	2.40	0.087	0.091	0.094
e	0.65 BSC			0.026 BSC		
L	0.50	0.55	0.60	0.020	0.022	0.024
L1	---	0.02	0.12	---	0.001	0.005
L2	0.28	0.38	0.48	0.011	0.015	0.019
L3	0.85 REF.			0.033 REF.		
L4	0.30 REF.			0.012 REF.		
aaa	0.15			0.006		
bbb	0.10			0.004		
ccc	0.10			0.004		
ddd	0.08			0.003		
eee	0.05			0.002		

Note:

- All dimensions are in millimeters.
- The dimensions with \* are just for reference.
- The location of the terminal #1 identifier and terminal numbering convention conforms to JEDEC publication 95 SPP-002.
- Dimension b applies to metallized terminal and is measured between 0.15mm and 0.30mm from the terminal tip. If the terminal has the optional radius on the other end of the terminal, the dimension b should not be measured in that radius area.
- Coplanarity applies to the terminals and all other bottom surface metallization.
- Drawing shown are for illustration only.