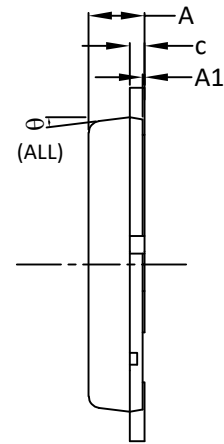
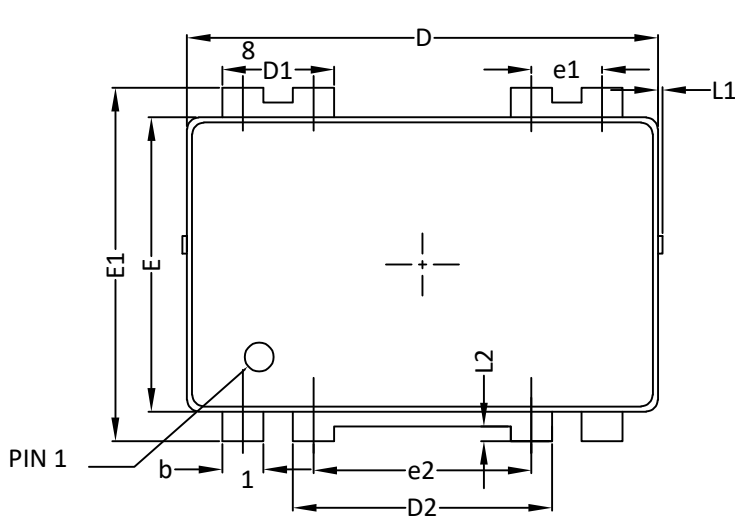


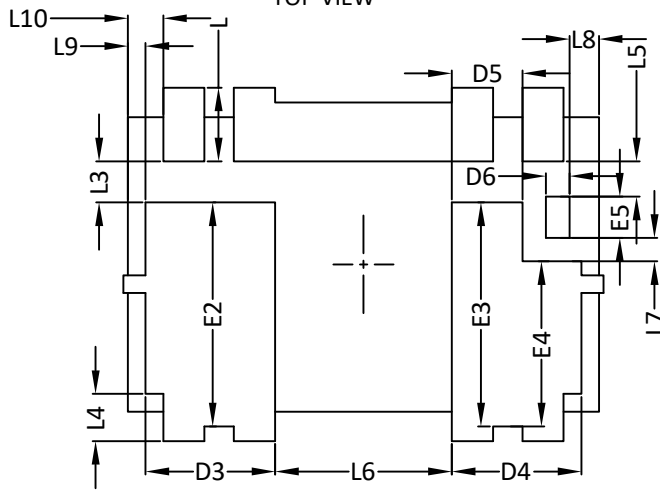


### DFN8x6\_8L\_EP2\_P PACKAGE OUTLINE



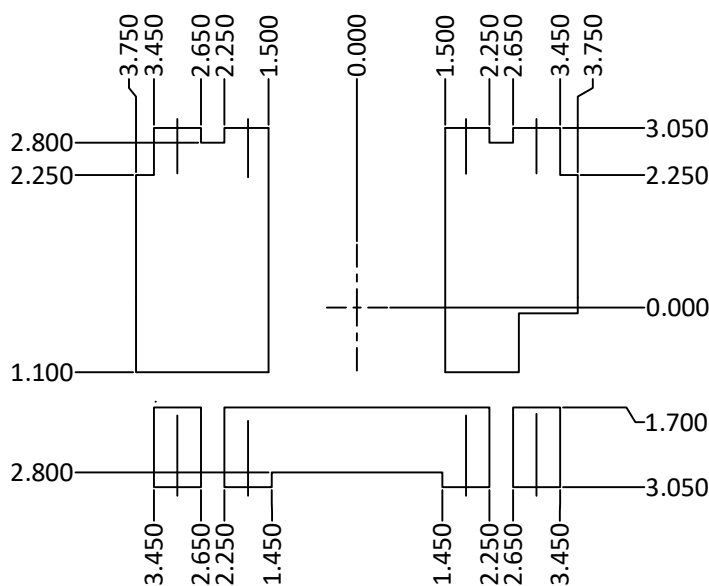
SIDE VIEW

TOP VIEW



BOTTOM VIEW

#### RECOMMENDED LAND PATTERN



SYMBOLS	DIM. IN MM			DIM. IN INCH		
	MIN.	NOM.	MAX.	MIN.	NOM.	MAX.
A	0.85	0.95	1.05	0.033	0.037	0.041
A1	0.00	-----	0.05	0.000	-----	0.002
b	0.60	0.70	0.80	0.024	0.028	0.031
c	0.20	0.25	0.30	0.008	0.010	0.012
D	7.80	8.00	8.20	0.307	0.315	0.323
D1	1.80	1.90	2.00	0.071	0.075	0.079
D2	4.30	4.40	4.50	0.169	0.173	0.177
D3	2.10	2.20	2.30	0.083	0.087	0.091
D4	2.10	2.20	2.30	0.083	0.087	0.091
D5	1.10	1.20	1.30	0.043	0.047	0.051
D6	0.30	0.40	0.50	0.012	0.016	0.020
E	4.80	5.00	5.20	0.189	0.197	0.205
E1	5.80	6.00	6.20	0.228	0.236	0.244
E2	3.70	3.80	3.90	0.146	0.150	0.154
E3	3.70	3.80	3.90	0.146	0.150	0.154
E4	2.70	2.80	2.90	0.106	0.110	0.114
E5	0.60	0.70	0.80	0.024	0.028	0.031
e1	1.2BSC			0.047BSC		
e2	3.7BSC			0.146BSC		
L	1.15	1.25	1.35	0.045	0.049	0.053
L1	0.00	-----	0.15	0.000	-----	0.006
L2	0.25REF			0.010REF		
L3	0.7REF			0.028REF		
L4	0.70	0.80	0.90	0.028	0.031	0.035
L5	0.50	0.60	0.70	0.020	0.024	0.028
L6	2.90	3.00	3.10	0.114	0.118	0.122
L7	0.30	0.40	0.50	0.012	0.016	0.020
L8	0.40	0.50	0.60	0.016	0.020	0.024
L9	0.20	0.30	0.40	0.008	0.012	0.016
L10	0.50	0.60	0.70	0.020	0.024	0.028
θ	0°	-	12°	0°	-	12°

**NOTE**

- PACKAGE BODY SIZES EXCLUDE MOLD FLASH AND GATE BURRS.  
MOLD FLASH AT THE NON-LEAD SIDES SHOULD BE LESS THAN 6 MILS EACH.
- THIS PACKAGE WAS QUALIFIED USING IR REFLOW PROCESS (JEDEC STANDARD). FOR USAGE IN OTHER SOLDERING PROCESSES, PLEASE CONTACT LOCAL AOS REPRESENTATIVES.

UNIT: mm