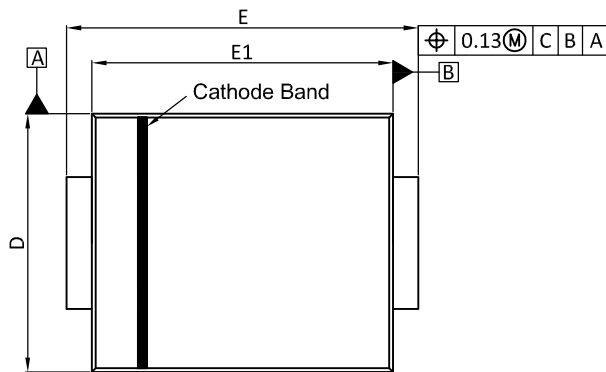
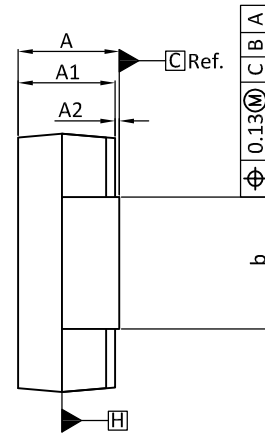




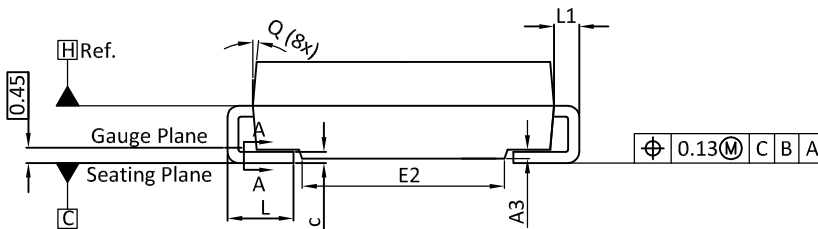
DO-214AB Package Outline



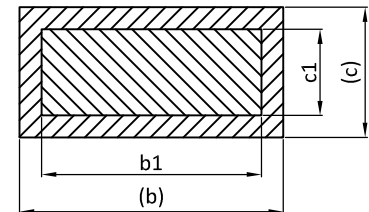
Top View



Side View

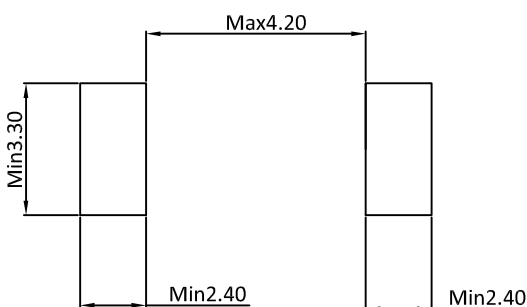


Side View



Section A-A

LAND PATTERN RECOMMENDATIONS



SYMBOLS	DIMENSION IN MILLIMETRES			DIMENSION IN INCHS		
	MIN.	NOM.	MAX.	MIN.	NOM.	MAX.
A	2.00	2.34	2.62	0.079	0.092	0.103
A1	2.01	2.22	2.42	0.079	0.087	0.095
A2	0.05	0.15	0.20	0.002	0.006	0.008
A3	0.05	---	0.30	0.002	---	0.012
b	2.90	---	3.20	0.114	---	0.126
b1	2.90	3.00	3.10	0.114	0.118	0.122
c	0.15	---	0.41	0.006	---	0.016
c1	0.15	0.23	0.31	0.006	0.009	0.012
D	5.59	5.90	6.22	0.220	0.232	0.245
E	7.75	7.95	8.13	0.305	0.313	0.320
E1	6.60	6.85	7.11	0.260	0.270	0.280
E2	4.40	4.55	4.70	0.173	0.179	0.185
L	0.76	1.15	1.52	0.030	0.045	0.060
L1	0.152	---	0.305	0.006	---	0.012
Q	0° - 8°			0° - 8°		

UNIT: mm

NOETS:

1. DIMESNSIONING AND TOLERANCING PER ASME Y14.5M-1994.
2. CONTROLLING DIMENSION IS MILLIMETER, CONVERTED INCH DIMENSIONS ARE NOT NECESSARILY EXACT.
3. DIMENSIONS D AND E1 DO NOT INCLUDE MOLD FLASH, MOLD FLASH SHALL NOT EXCEED 0.13MM PER SIDE.
4. DIMENSIONS b1 AND c1 APPLY TO BASE METAL ONLY.
DIMENSIONS b AND c APPLY TO PLATED LEADS.
DIMENSIONS b,c,b1,c1 TO BE MEASURED ON FLAT SECTION OF THE LEAD.
BETWEEN 0.13 AND 0.25MM FROM LEAD TIP.
5. DIMENSIONS D AND E1 TO BE DETERMINED AT DATUM PLANE H.