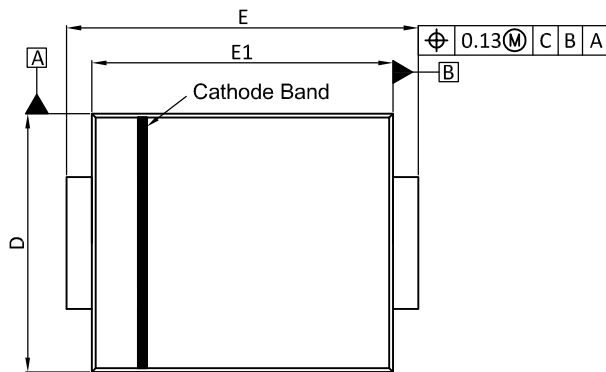
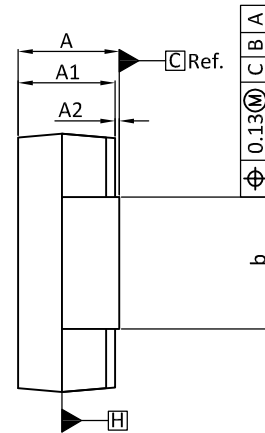




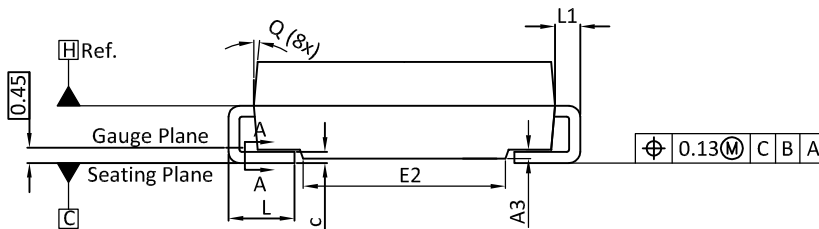
## DO-214AC Package Outline



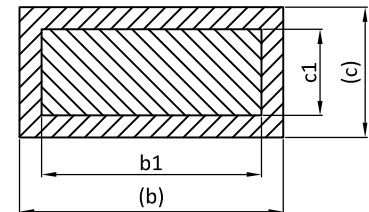
Top View



Side View

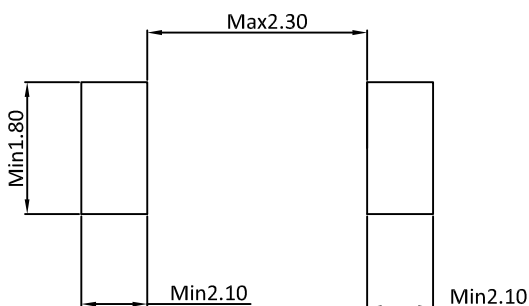


Side View



Section A-A

### LAND PATTERN RECOMMENDATIONS



UNIT: mm

SYMBOLS	DIMENSION IN MILLIMETRES			DIMENSION IN INCHS		
	MIN.	NOM.	MAX.	MIN.	NOM.	MAX.
A	1.98	2.14	2.29	0.078	0.084	0.090
A1	1.93	1.99	2.09	0.076	0.078	0.082
A2	0.05	0.15	0.20	0.002	0.006	0.008
A3	0.05	---	0.30	0.002	----	0.012
b	1.25	---	1.65	0.049	----	0.065
b1	1.25	1.40	1.55	0.049	0.055	0.061
c	0.15	---	0.41	0.006	----	0.016
c1	0.15	0.23	0.31	0.006	0.009	0.012
D	2.54	2.67	2.79	0.100	0.105	0.110
E	4.93	5.11	5.28	0.194	0.201	0.208
E1	3.99	4.25	4.50	0.157	0.167	0.177
E2	1.40	1.65	1.90	0.055	0.065	0.075
L	0.76	1.15	1.52	0.030	0.045	0.060
L1	0.152	---	0.305	0.006	----	0.012
Q	0° - 8°			0° - 8°		

### NOETS:

1. DIMESNSIONING AND TOLERANCING PER ASME Y14.5M-1994.
2. CONTROLLING DIMENSION IS MILLIMETER, CONVERTED INCH DIMENSIONS ARE NOT NECESSARILY EXACT.
3. DIMENSIONS D AND E1 DO NOT INCLUDE MOLD FLASH, MOLD FLASH SHALL NOT EXCEED 0.13MM PER SIDE.
4. DIMENSIONS b1 AND c1 APPLY TO BASE METAL ONLY.  
DIMENSIONS b AND c APPLY TO PLATED LEADS.  
DIMENSIONS b,c,b1,c1 TO BE MEASURED ON FLAT SECTION OF THE LEAD.  
BETWEEN 0.13 AND 0.25MM FROM LEAD TIP.
5. DIMENSIONS D AND E1 TO BE DETERMINED AT DATUM PLANE H.