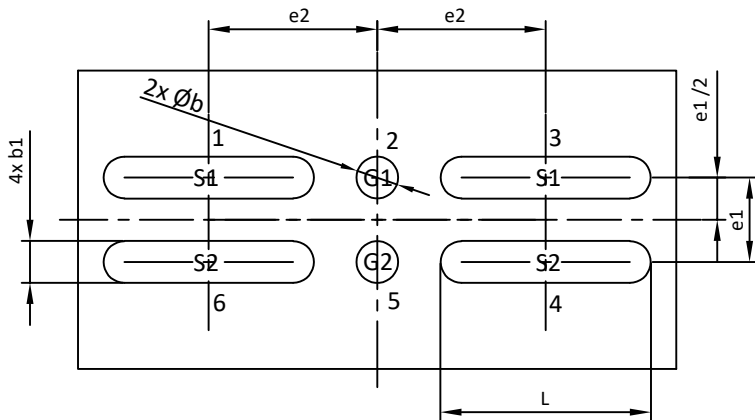
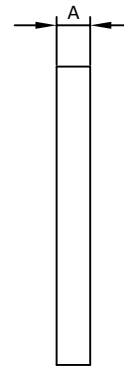




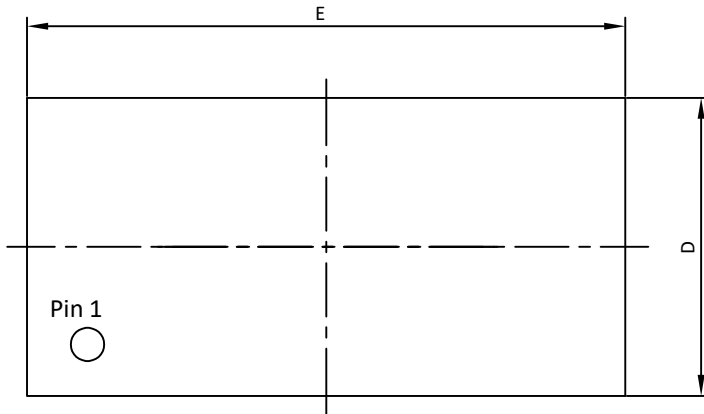
AlphaDFN3.55x1.77_6 Package Outline



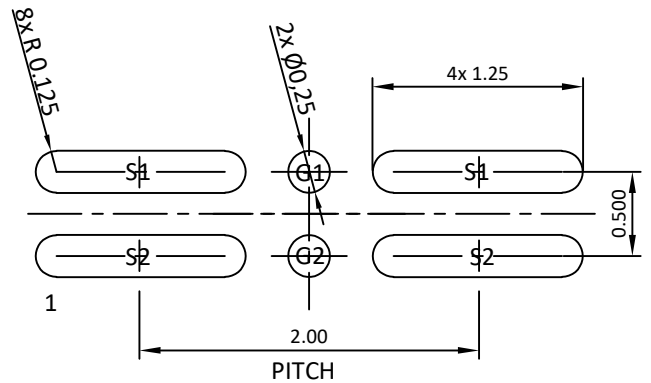
BUMP UP



SIDE VIEW



BUMP DOWN



RECOMMENDED LAND PATTERN

| SYMBOLS | DIM. IN MM | | | DIM. IN INCH | | |
|---------|------------|-------|-------|--------------|--------|--------|
| | MIN. | NOM. | MAX. | MIN. | NOM. | MAX. |
| A | ----- | ----- | 0.250 | ----- | ----- | 0.0098 |
| b | 0.220 | 0.250 | 0.280 | 0.0087 | 0.0098 | 0.0110 |
| b1 | 0.220 | 0.250 | 0.280 | 0.0087 | 0.0098 | 0.0110 |
| D | 1.720 | 1.770 | 1.820 | 0.0677 | 0.0697 | 0.0717 |
| E | 3.500 | 3.550 | 3.600 | 0.1378 | 0.1398 | 0.1417 |
| L | 1.220 | 1.250 | 1.280 | 0.0480 | 0.0492 | 0.0504 |
| e1 | 0.500BSC | | | 0.0197 | | |
| e2 | 1.000BSC | | | 0.0394 | | |

NOTE:

1. CONTROLLED DIMENSIONS ARE IN MILLIMETERS. CONVERTED INCH DIMENSIONS ARE NOT NECESSARILY EXACT.
2. THE 0.07MM SCRIBLE LINE IS INCLUDED IN THE POD.
3. THIS PACKAGE WAS QUALIFIED USING IR REFLOW PROCESS (JEDEC STANDARD). FOR USAGE IN OTHER SOLDERING PROCESSES, PLEASE CONTACT LOCAL AOS REPRESENTATIVES.