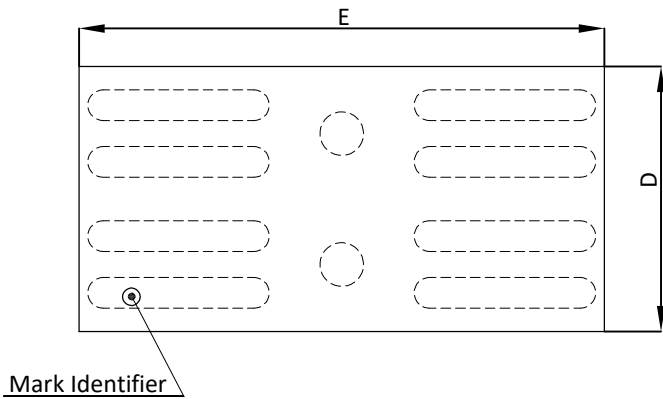
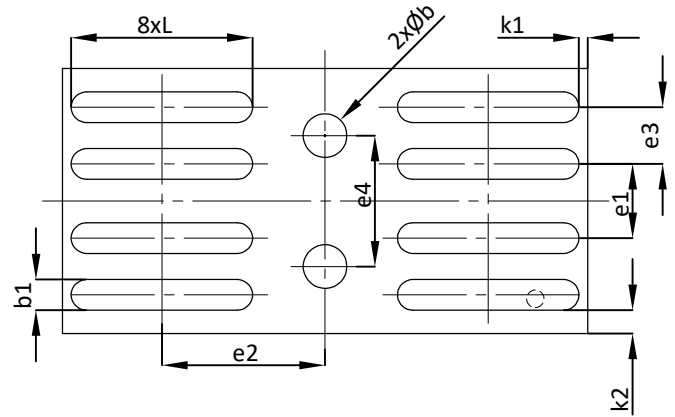




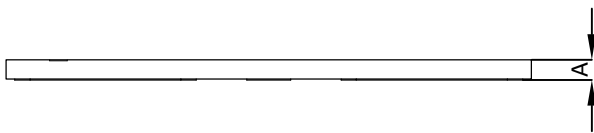
AlphaDFN3.01x1.52B_10 PACKAGE OUTLINE



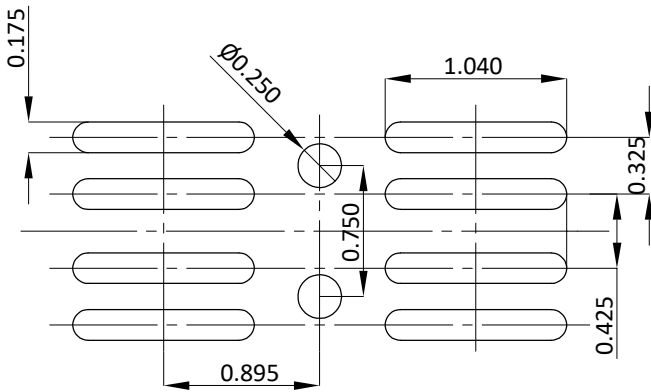
TOP VIEW



BOTTOM VIEW



SIDE VIEW



RECOMMENDED LAND PATTERN

SYMBOLS	DIM. IN MM			DIM. IN INCH		
	MIN.	NOM.	MAX.	MIN.	NOM.	MAX.
A	0.064	0.094	0.124	0.0025	0.0037	0.0049
b	0.220	0.250	0.280	0.0087	0.0098	0.0110
b1	0.145	0.175	0.205	0.0057	0.0069	0.0081
D	1.490	1.520	1.550	0.0587	0.0598	0.0610
E	2.980	3.010	3.040	0.1173	0.1185	0.1197
e1	0.425BSC.			0.0167BSC.		
e2	0.895BSC.			0.0352BSC.		
e3	0.325BSC.			0.0128BSC.		
e4	0.750BSC.			0.0295BSC.		
L	1.010	1.040	1.070	0.0398	0.0409	0.0421
k1	---	0.050	---	---	0.0020	---
k2	---	0.135	---	---	0.0053	---

NOTE:

- CONTROLLED DIMENSIONS ARE IN MILLIMETERS.
- SPECIAL NOTE: 30µm SCRIBELINE WIDTH IS INCLUDED IN THE DRAWINGS.
- TOP VIEW IS THE VIEW OF TOP SURFACE OF THE PART HAVING INDEX AND PART NUMBER MARKING.
- THIS PACKAGE WAS QUALIFIED USING IR REFLOW PROCESS (JEDEC STANDARD). FOR USAGE IN OTHER SOLDERING PROCESSES, PLEASE CONTACT LOCAL AOS REPRESENTATIVES.