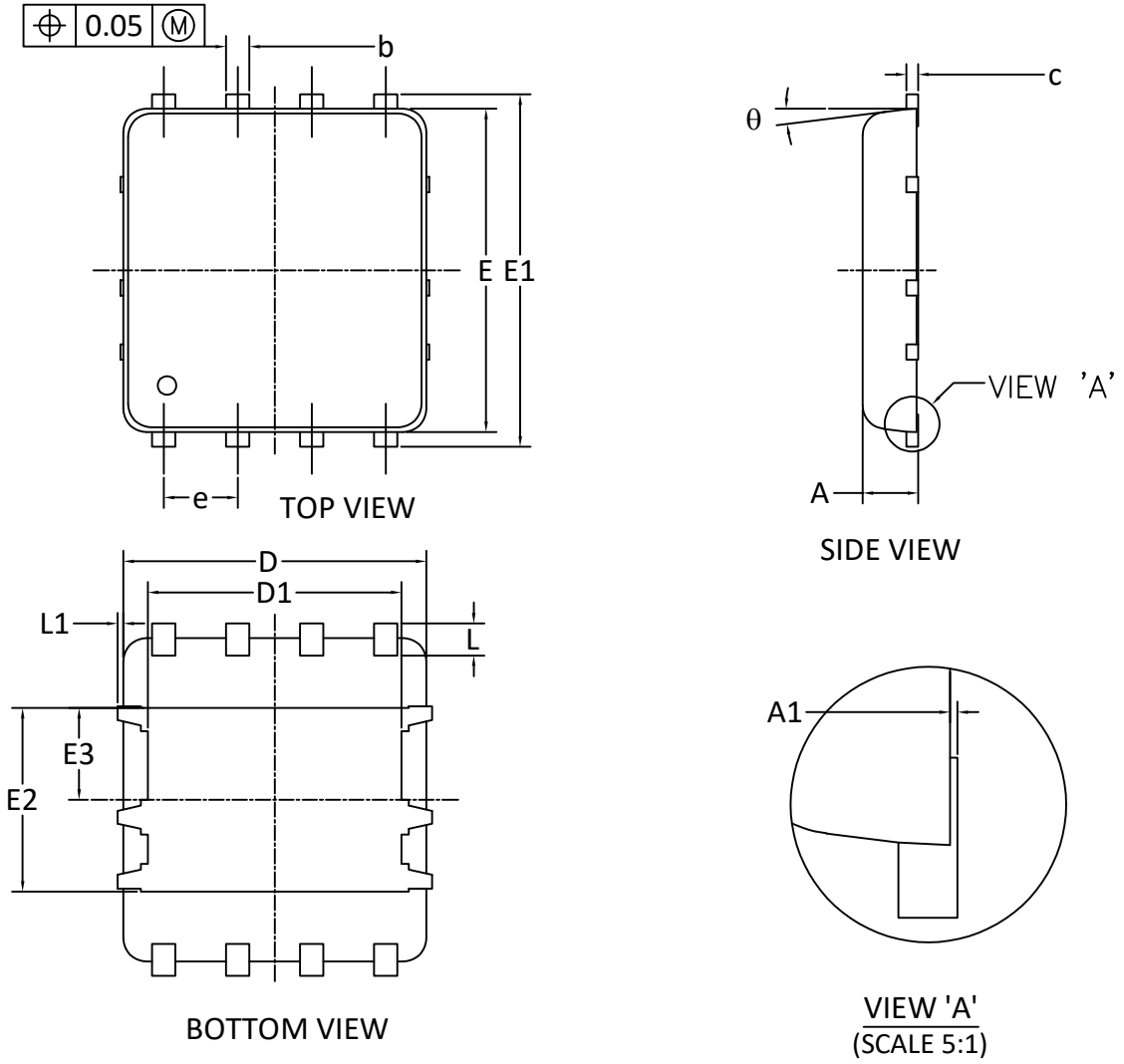
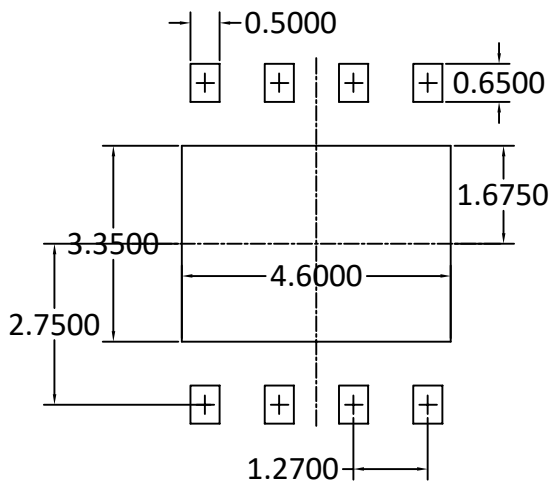




DFN5x6B\_8L\_EP1\_P PACKAGE OUTLINE



RECOMMENDED LAND PATTERN



UNIT: mm

SYMBOLS	DIM. IN MM			DIM. IN INCH		
	MIN.	NOM.	MAX.	MIN.	NOM.	MAX.
A	0.850	0.950	1.000	0.033	0.037	0.039
A1	0.000	-	0.050	0.000	-	0.002
b	0.300	0.400	0.500	0.012	0.016	0.020
c	0.150	0.200	0.250	0.006	0.008	0.010
D	5.20BSC			0.205BSC		
D1	4.35BSC			0.171BSC		
E	5.55BSC			0.219BSC		
E1	6.05BSC			0.238BSC		
E2	3.15BSC			0.124BSC		
E3	1.575BSC			0.062BSC		
e	1.27BSC			0.050BSC		
L	0.450	0.550	0.650	0.018	0.022	0.026
L1	0.000	-	0.150	0.000	-	0.006
$\theta$	0°	-	10°	0°	-	10°

NOTE

- PACKAGE BODY SIZES EXCLUDE MOLD FLASH AND GATE BURRS.  
MOLD FLASH AT THE NON-LEAD SIDES SHOULD BE LESS THAN 6 MILS EACH.
- CONTROLLING DIMENSION IS MILLIMETER.  
CONVERTED INCH DIMENSIONS ARE NOT NECESSARILY EXACT.
- THIS PACKAGE WAS QUALIFIED USING IR REFLOW PROCESS (JEDEC STANDARD). FOR USAGE IN OTHER SOLDERING PROCESSES, PLEASE CONTACT LOCAL AOS REPRESENTATIVES.