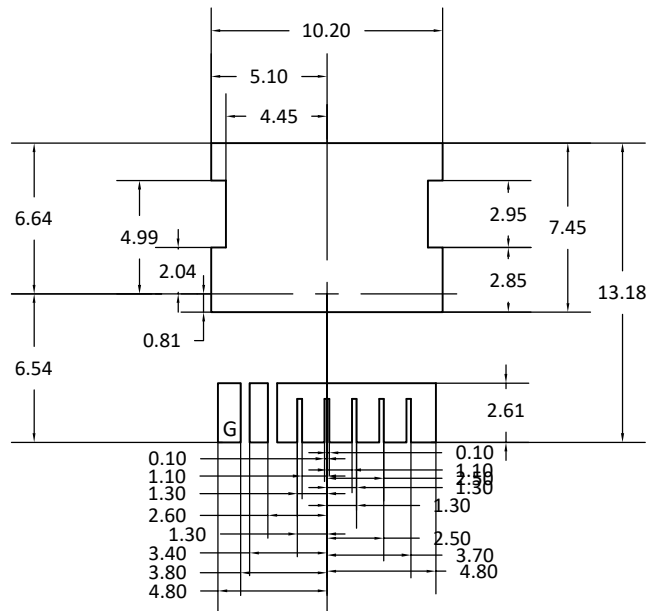
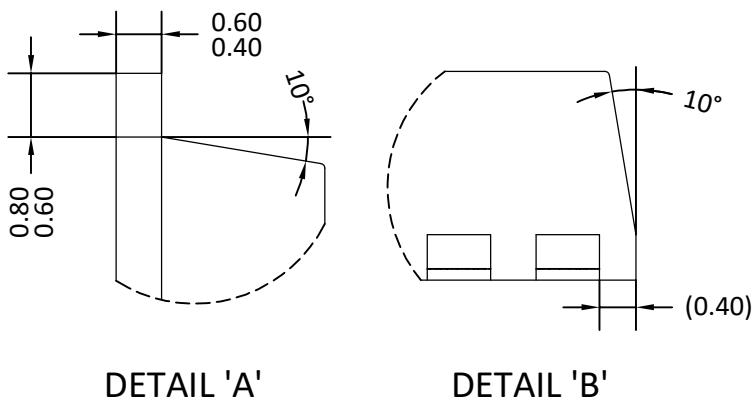
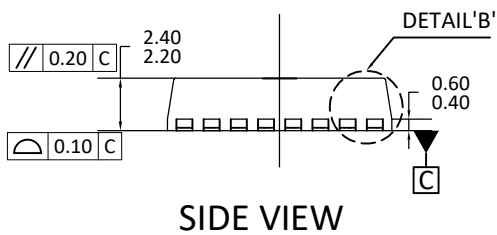
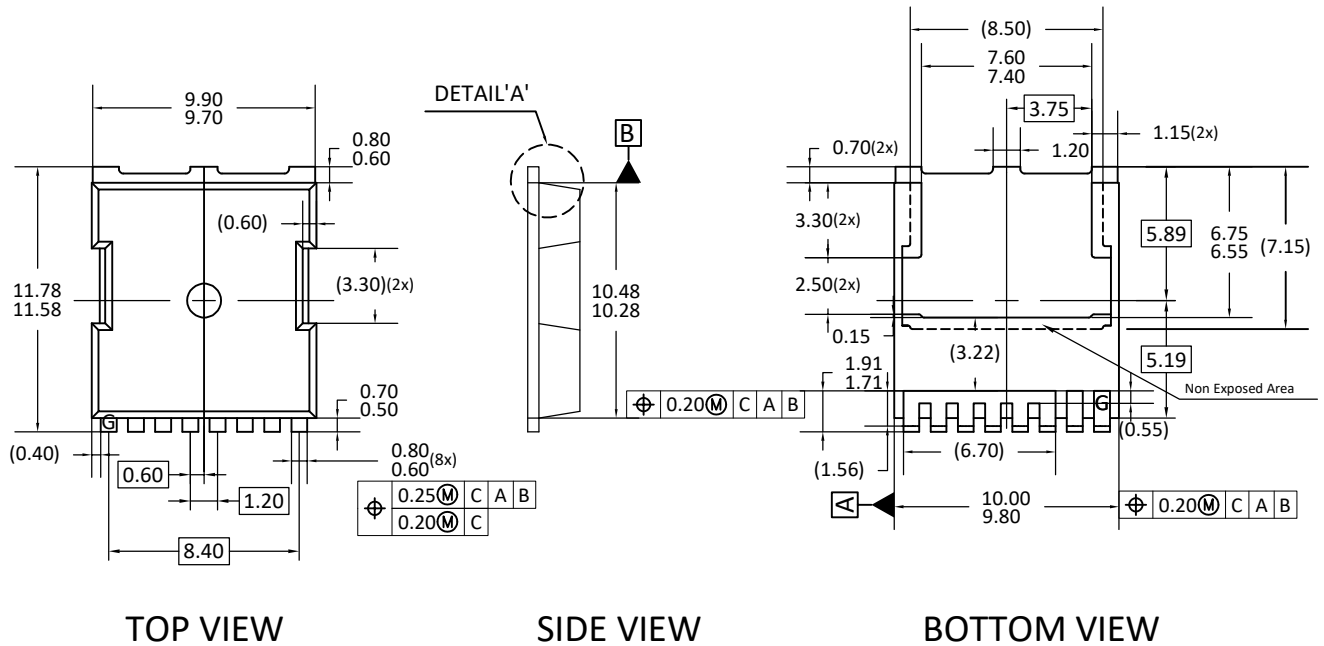


## TOLL PACKAGE OUTLINE



**NOTE**

UNIT: mm

- A) PACKAGE BODY SIZES EXCLUDE MOLD FLASH AND GATE BURRS. MOLD FLASH SHOULD BE LESS THAN 6 MIL.
- B) TOLERANCE 0.100 MILLIMETERS UNLESS OTHERWISE SPECIFIED.
- C) CONTROLLING DIMENSION IS MILLIMETER. CONVERTED INCH DIMENSIONS ARE NOT NECESSARILY EXACT.
- D) ( ) IS REFERENCE
- E) THIS PACKAGE WAS QUALIFIED USING IR REFLOW PROCESS (JEDEC STANDARD). FOR USAGE IN OTHER SOLDERING PROCESSES, PLEASE CONTACT LOCAL AOS REPRESENTATIVES.

### LAND PATTERN RECOMMENDATIONS