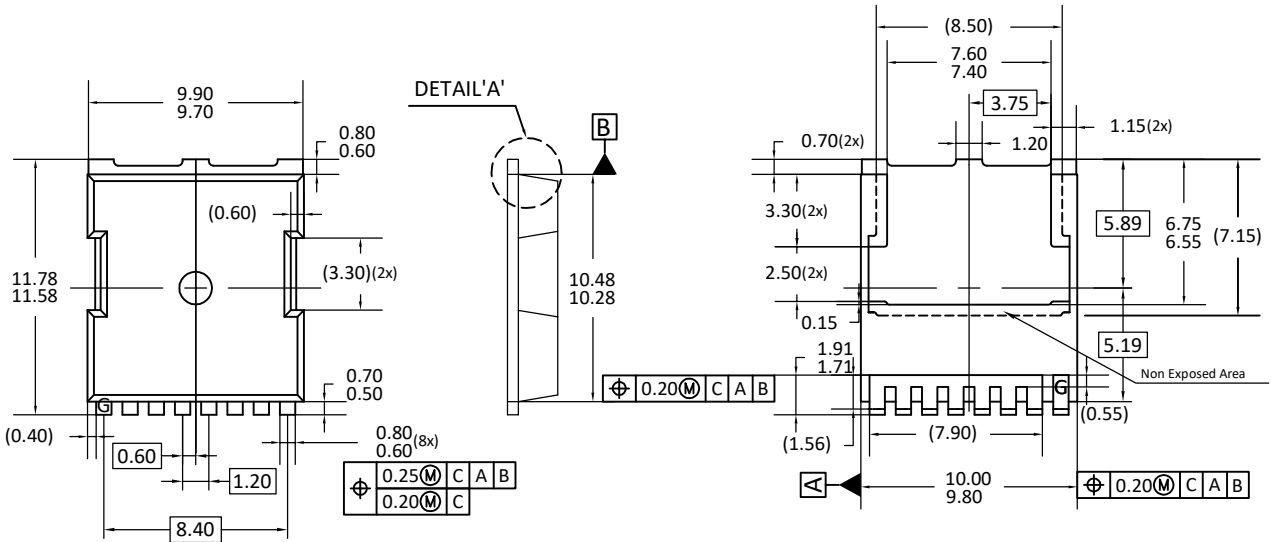




| | |
|--------------|----------|
| Document No. | PO-00272 |
| Version | D |

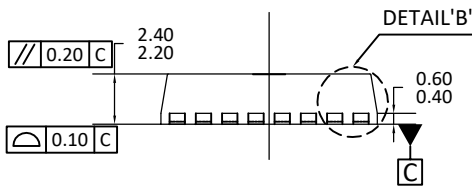
TOLLA PACKAGE OUTLINE



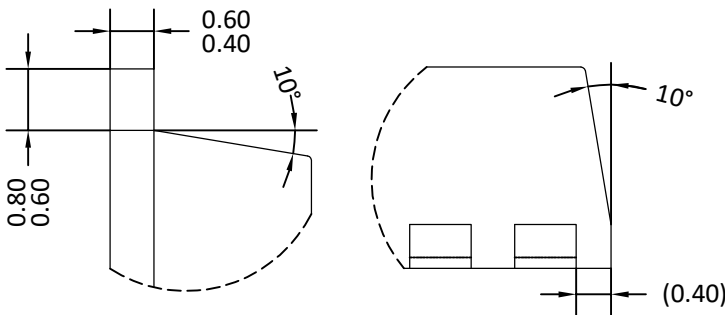
TOP VIEW

SIDE VIEW

BOTTOM VIEW



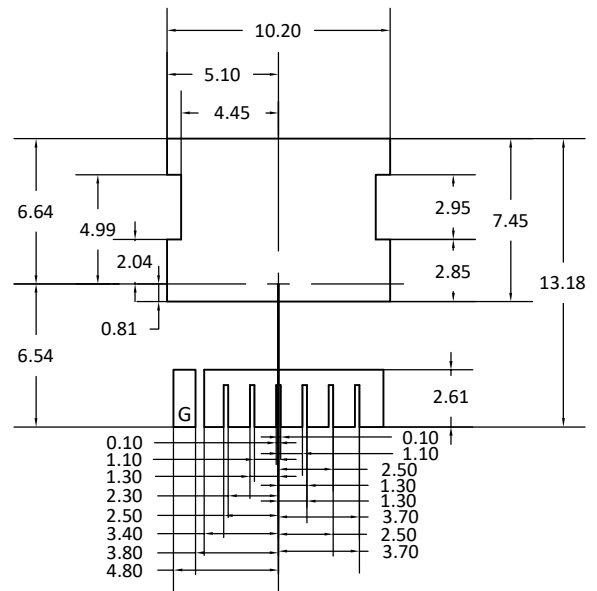
SIDE VIEW



DETAIL 'A'

DETAIL 'B'

UNIT: mm



LAND PATTERN RECOMMENDATIONS

NOTE:

- A) PACKAGE BODY SIZES EXCLUDE MOLD FLASH AND GATE BURRS. MOLD FLASH SHOULD BE LESS THAN 6 MIL.
- B) TOLERANCE 0.100 MILLIMETERS UNLESS OTHERWISE SPECIFIED.
- C) CONTROLLING DIMENSION IS MILLIMETER. CONVERTED INCH DIMENSIONS ARE NOT NECESSARILY EXACT.
- D) () IS REFERENCE.
- E) THIS PACKAGE WAS QUALIFIED USING IR REFLOW PROCESS (JEDEC STANDARD). FOR USAGE IN OTHER SOLDERING PROCESSES, PLEASE CONTACT LOCAL AOS REPRESENTATIVES.